

# INTERSECTION COLLISION WARNING

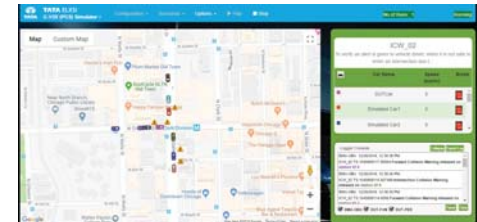
DEMONSTRATION

## APPLICATION SCENARIO

- Multiple emulated cars approach an intersection from different directions
- The car under test is issued a collision warning in time
- A possible collision is avoided

## SCOPE

- Scenario and car movements were created. Real-world conditions were emulated using synthesized RF Signals
- Messages were passed between the simulated cars
- Functional and performance validation of V2X algorithms was achieved
- RF equipment used - GNSS Simulator, CAN Simulator, Channel Emulator
- Cohda wireless DSRC hardware for generating DSRC 802.11p packets



## BENEFITS

- Cost savings on field-testing – saves logistical, test track and fuel expenses that could be 11K USD for a car/ month
- Time saved - Faster time to market with dev-test-fix iterations in hours instead of weeks
- Quality assurance delivered – Absolute quality assurance coming from extensive testing of up to 837 km/ day for each DUT